

Established 1871 The Chelsea Standard Telephone 475-1371
Walter P. Leonard, Editor and Publisher
Excellence Award By Michigan Press Association
1951-1952-1959-1961-1965-1966

Published every Thursday morning at 300 North Main Street, Chelsea, Mich. 48118, and second class postage paid at Chelsea Mich., under the Act of March 3, 1979.

Subscription Rates (Payable in Advance)
In Michigan: Single Copies \$.20, Six Months \$3.50, One Year \$6.00
Outside Michigan: Single Copies \$.25, Six Months \$4.50, One Year \$8.50

MEMBER National Advertising Representative: MICHIGAN NEWSPAPERS, INC.
257 Michigan Ave. East Lansing, Mich. 48823

Uncle Lew from Lima Says:

DEAR MISTER EDITOR: I don't depend on the radio for news of nothing but the weather, but it was on the morning at breakfast and I happen to catch an interview with some Congressman that was making his case for a shorter work day.

to make up your mind about the matter. Was this Congressman making a joke? Has he been in Washington so long that he thinks the real world can be run like the inflation proof and depression proof Federal Government that can hire more and more people to do less and less work without worrying about matching outgo and income?

Howell Livestock Auction

Starts 1 p.m. Every Monday
Mason 676-5400
The Wise Owl Sows Ship to Howell
Ph. (517) 548-3300 Bim Franklin
Market Report for May 14

CATTLE-- Bulk Gd.-Choice Steers, \$72 to \$75.25
Few High Choice Steers, \$75 to \$75.25
Gd.-Choice Heifers, \$68 to \$72
Fed Holstein Steers, \$68 to \$70
Ut.-Stal., \$65 and down.

BULLS-- Heavy Bologna, \$68 to \$72
Light and Common, \$65 and down.
FEEDERS-- 400-600 lb. Good-Choice Steers, \$90 to \$100
600-800 lb. Good-Choice Steers, \$75 to \$90
300-400 lb. Good-Choice Heifers, \$75 to \$90
200-300 lb. Holstein Steers, \$80 to \$85
600-800 lb. Holstein Steers, \$70 to \$80

CALVES-- Prime, \$110 to \$120
Good-Choice, \$95 to \$110
Heavy Deacons, \$100 to \$115
Cull & Med., \$60 to \$90
Calves going back to farms sold up to \$140.

SHEEP-- Wooled Slaughter Lambs: Choice-Prime, \$76 to \$82
Good-Utility, \$68 to \$72
Slaughter Ewes, \$18 to \$32
Fleecer Lambs, all weights, \$65 to \$72

HOGS-- 210 to 240 lbs., No. 1, \$45 to \$47
240-250 lbs., No. 2, \$43 to \$45
Heavy Hogs, 250 lbs. up, \$40 to \$42
Light Hogs, 200 lbs. down, \$38 to \$42

SOYS-- Fancy Light, \$40 to \$41
30-50 lb., \$38 to \$40
500 lbs. and up, \$38 to \$40

BIRDS AND STAYS-- All Weights, \$37 to \$40
Fredder Pigs: Per Head, \$30 to \$85
Est. 40 lb. pigs, \$44 to \$50

HAY-- 1st Cutting, per bale, 25c to 60c
2nd Cutting, per bale, 70c to \$1.60

STRAW-- Per Bale, 60c to \$1.10
COWS-- Tested Dairy Cows, \$800 to \$1,100
Tested Heel Type Cows, \$500 to \$700

Subscribe today to The Standard!

HICKORY KNOLL
4- to 10-Acre Building Sites
Natural gas, underground utilities.
Drainfield areas installed and approved.
Just off Dexter-Ann Arbor Rd.
Dexter schools, Ann Arbor phones.
Call 994-6680 or 665-7946

Tonight and Every Thursday
THE CAPTAINS TABLE
ROAST BEEF BUFFET
"Carved Before Your Eyes"
Serving from 4:30-9:30 p.m.
The Captains Table - 8093 Main St., Dexter

MICHIGAN MIRROR
By Warren M. Hoyt, Secretary, Michigan Press Association

Lobbyist Control Act
Legislation to require lobbyists and their agents to register and report expenditures has yet to take effect although the bill was passed last year.
The act was to take effect on April 1, or six months after administrative rules are approved, whichever came later.
However, following a recent public hearing on the proposed rules, it appears it will be many months yet before agreement is reached and lobbyists are required to come under the original intent of the act.

JUST REMINISCING
Items taken from the files of The Chelsea Standard

4 Years Ago...
Thursday, May 22, 1975-
Allyn Seitz is the pleased owner of a colorful 42-square patched quilt won at the home of Carol Flinthof, where she and 38 women were busily "quilting for Cancer."

14 Years Ago...
Thursday, May 27, 1965-
Mrs. George (Rena) Walworth, who has been affiliated with Chelsea's public library since it was founded by the then Child Study Club in 1932, has announced her retirement.

34 Years Ago...
Thursday, May 24, 1945-
The current Seventh War Loan is in the second week. Through May 19, the purchases of bonds amounted to a little more than 14 percent of the quota set for Chelsea.

24 Years Ago...
Thursday, May 28, 1955-
Three downtown Chelsea business places are in the process of doing extensive remodeling. These include Gambles, where a 20x80-foot basement showroom is nearing completion; Chelsea Bakery and the store directly south of it, which are undergoing complete transformation; and Chelsea Drug Store, which is being modernized by installation of a new aluminum front with wide expanse of glass

14 Years Ago...
Thursday, May 27, 1965-
Mrs. George (Rena) Walworth, who has been affiliated with Chelsea's public library since it was founded by the then Child Study Club in 1932, has announced her retirement.

14 Years Ago...
Thursday, May 27, 1965-
Mrs. George (Rena) Walworth, who has been affiliated with Chelsea's public library since it was founded by the then Child Study Club in 1932, has announced her retirement.

14 Years Ago...
Thursday, May 27, 1965-
Mrs. George (Rena) Walworth, who has been affiliated with Chelsea's public library since it was founded by the then Child Study Club in 1932, has announced her retirement.

14 Years Ago...
Thursday, May 27, 1965-
Mrs. George (Rena) Walworth, who has been affiliated with Chelsea's public library since it was founded by the then Child Study Club in 1932, has announced her retirement.

14 Years Ago...
Thursday, May 27, 1965-
Mrs. George (Rena) Walworth, who has been affiliated with Chelsea's public library since it was founded by the then Child Study Club in 1932, has announced her retirement.

NOW IN PROGRESS AT HENDERSON FORD SALES
6% SALE
All new cars in stock are now being sold for 6% over FACTORY INVOICE!
Now thru May 31, 1979.
3480 Jackson Rd., ANN ARBOR - 769-7900

KITCHEN REMODELING
We at Dutch Country are kitchen remodeling specialists.
Expert installation available.
Free design layout service.
Featuring: HAND CRAFTED AMISH CABINETS.
Distinctive "GOLDEN OAK CABINETS" By Continental.
Jenn-Air Appliances ★ Delta Faucets ★ Elkay & Kohler Sinks.
VISIT OUR SHOWROOM
DUTCH COUNTRY KITCHENS
146 E. Main 428-7292 Manchester

AGRICULTURE IN ACTION
MICHIGAN FARM BUREAU

Political Bogeyman
Speaking to a convention of one of the major national farm organizations recently, Secretary of Agriculture Bob Bergland said that he did not want to see an America where a handful of giant farmers own, manage and control the entire food production system. "Yet," said the Secretary, "that is where we are headed."

A recent issue of Parade, the national Sunday supplement magazine, included a short article which asserted that the big corporate farms are taking over American agriculture and that the family farm can no longer compete with the giant corporations.

This is a propaganda theme that has been used by politicians over the years to justify unjustifiable government farm programs; more recently by fringe protest groups within agriculture and by back-to-nature groups who envision a return to what they perceive as the "good old days," when most people worked from dawn to dusk on their little subsistence farms to eke out a living.

Let's look at the facts. Corporate farming accounts for only 11 percent of the land being farmed and 18 percent of the value of agricultural products sold. That looks like a sizeable chunk; but there's a catch to that term "corporate farm."

Nearly 80 percent of all incorporated farms are family owned and operated. Corporations with more than 110 shareholders produce only 5.3 percent of the total sales of farm products; and only 3 percent of all corporate farms are operated by conglomerates.

It's true that we have fewer farms each year; but it is also true that the great bulk of them are family-owned and operated; and there's no disputing the fact that the well-managed family farm is the most efficient unit of agricultural production to be found anywhere in the world.

All services and assistance provided by the Department of Labor for middle-aged and older workers is open to those encountering, or who anticipate encountering difficulty in securing and maintaining employment due to reasons related to age or characteristics associated with age.

Please Notify Us In Advance of Any Address Change.

Umpires Needed For Summer Baseball Leagues
Umpires are still needed for Youth Baseball, Girls Softball, Babe Ruth Baseball and Adult Softball this summer. The pay for officials at Adult Softball is \$15 a game. Pay for those officiating in the other three leagues is \$4 per game.

34 Years Ago...
Thursday, May 24, 1945-
The current Seventh War Loan is in the second week. Through May 19, the purchases of bonds amounted to a little more than 14 percent of the quota set for Chelsea.

14 Years Ago...
Thursday, May 27, 1965-
Mrs. George (Rena) Walworth, who has been affiliated with Chelsea's public library since it was founded by the then Child Study Club in 1932, has announced her retirement.

14 Years Ago...
Thursday, May 27, 1965-
Mrs. George (Rena) Walworth, who has been affiliated with Chelsea's public library since it was founded by the then Child Study Club in 1932, has announced her retirement.

14 Years Ago...
Thursday, May 27, 1965-
Mrs. George (Rena) Walworth, who has been affiliated with Chelsea's public library since it was founded by the then Child Study Club in 1932, has announced her retirement.

14 Years Ago...
Thursday, May 27, 1965-
Mrs. George (Rena) Walworth, who has been affiliated with Chelsea's public library since it was founded by the then Child Study Club in 1932, has announced her retirement.

14 Years Ago...
Thursday, May 27, 1965-
Mrs. George (Rena) Walworth, who has been affiliated with Chelsea's public library since it was founded by the then Child Study Club in 1932, has announced her retirement.

14 Years Ago...
Thursday, May 27, 1965-
Mrs. George (Rena) Walworth, who has been affiliated with Chelsea's public library since it was founded by the then Child Study Club in 1932, has announced her retirement.

14 Years Ago...
Thursday, May 27, 1965-
Mrs. George (Rena) Walworth, who has been affiliated with Chelsea's public library since it was founded by the then Child Study Club in 1932, has announced her retirement.

14 Years Ago...
Thursday, May 27, 1965-
Mrs. George (Rena) Walworth, who has been affiliated with Chelsea's public library since it was founded by the then Child Study Club in 1932, has announced her retirement.

PROCLAMATION

WHEREAS, during the past two years, 3 children from South School have been involved in fatal bicycle accidents,
WHEREAS, now that warm weather has finally arrived and children are out on the streets and sidewalks riding their bicycles more than any other time of the year,
WHEREAS, bicycle safety should be brought to everyone's attention,
THEREFORE, to create community awareness to the safety program being conducted by the Chelsea School System, Lion's Club and McDonald's, I hereby proclaim May 12 through May 20, 1979 as bicycle safety week in Chelsea so that children of all ages may learn the correct methods of operating their bicycles.
Don D. Wood, Chelsea Village President.

Bologna Polish Sausage Wieners \$1.19 lb.
Reserve a locker for your garden vegetables NOW!
DUNBAR'S DEXTER FOOD LOCKERS
Paul Dunbar, Owner 8063 Main St., Dexter Ph. 426-8466

A 24-hour Hotline and identification
Extensive referral information
Free long term counseling
Drug Education presentations
Assertiveness, empathy and suicide prevention training
Accurate and reliable drug information
CALL 994-HELP
(994-HELP/994-HELP/DRUG HELP is Federally licensed for substance abuse counseling.)

Advertise Your Auction in The Standard To Assure A Good Attendance!

Save Some Me Money!
Me Money! Money for a trip. Fun. You deserve it. But your budget is tight. Where do you get it? Squeeze it. Squeeze it out of your budget. Impossible? Not really...here's how you can do it. Put \$10 or \$20 a week in a 5 1/2% per annum savings account at Great Lakes Federal Savings. Then as one leading financial columnist advises sharpen your shopping. You can save dollars every week on daily necessities by shopping "smart". Buy lesser known but quality brands. Shop for bargains. Cut back a half pack of cigarettes a day. Won't hurt you a bit. Take a bus occasionally...cut back on gas. Turn the thermometer down. Park your car and walk and save the parking bill. When you eat out pick lower cost meals. Make a family game of it with the whole family. As you see your savings grow and your goal coming closer, it becomes exciting. Save some me money today.
Months required to save this amount with 5 1/2% interest compounded quarterly added
SAMPLE GOALS AMOUNT NEEDED PER WEEK SAVE
Theater weekend in Chicago for 2 \$250 \$10 6 months
5 days 4 nights in Bermuda for 2 \$1200 \$20 14 months
One Design Sailboat \$95 \$15 12 months
GREAT LAKES FEDERAL SAVINGS
Offices in Ann Arbor, Battle Creek, Albion, Bellevue, Brighton, Chelsea, Coldwater, Dexter, Hastings, Jackson, Manchester, Marshall, Richland, Saline, Ypsilanti Member FDIC



Opening Practice In Chelsea

Dr. U. E. Trobridge, his wife Mary Jo and their three sons, Daniel, Matthew and Andrew, are moving to the Chelsea area to establish his practice as a chiropractic physician.

Dr. Trobridge is a 1970 graduate from the Lincoln College of Chiropractic, Indianapolis, Ind., and a 1972 graduate of the Mesa College of Naturopathic Medicine, Mesa, Ariz. He also possesses postgraduate credits in pharmacology, general practice, internal medicine and oriental autonomic nerve balancing technique, a non-invasive form of Japanese acupuncture. These credits were obtained through the American College of Chiropractic Internists, Detroit.

Dr. Trobridge is also an active member of the Complete Nutrition Program, a program which encourages to eaten people to health and maintain good health through proper nutritional means.

Initially Dr. Trobridge will continue to Chelsea until school is out, at which time it will be more convenient for the family to move. Due to this office hours will be by appointment on Tuesdays, Thursdays and Saturdays. He will be located in the office of Dr. George Koffman, 138 E. Middle.

Dr. Trobridge is an active member of the National Association of Naturopathic Physicians and the Michigan Association of Naturopathic Physicians. He is a past member of the Optimist Club, Civilian Club, the Fiks, director of activities for the Boy Scouts of America at a district level and the Big Brother Program.

VIETNAM VETERANS WEEK
Vietnam Veterans Week, from May 28 to June 3, will be a one-time opportunity for the people of the United States, to put aside their convictions about the war itself and pay tribute to the people who were called upon to fight it, according to Max Cleland, Administrator of Veterans Affairs.

MASONRY
FIREPLACES
BRICK and BLOCK
LAYING
FREE ESTIMATES
DENNIS GAREN
Ph. (313) 475-2584

Washtenaw 4-H Members Score at Horse Jamboree

Washtenaw 4-H members competed with more than 500 others at the State 4-H Horse Jamboree held at Michigan State University.

Paula Hutchings of Dexter placed second in the state in the horse slide presentation contest. Her carefully prepared slide presentation was on "Grooming A Horse."

The county's Senior Horse Judging Team earned the right to represent Michigan in national competition by placing third in the state contest. Members of the team judged seven halter and performance classes and defended their placings orally to the officials. Placing in the top 20 were Kelly Murray, 11th, Whitmore Lake; Dee De Starling, 15th, Saline; and Lynne Warden, 17th, Dexter. The other member of the team was Pam Sherrill of South Lyon.

Placing third in the Junior Horse Judging Contest was Paul Patrick, Dexter; Diane Long, South Lyon; Sharon Pearson, Northville; and Kelly Knepper, Ann Arbor. Diane placed seventh and Sharon placed 12th in the contest.

Petra Messner, Saline, placed seventh in the Senior Public Speaking Contest and Todd Post, Manchester, placed ninth. Petra also placed seventh in the Senior Individual Demonstration Contest.

Canoeing Instructor Course Slated By Red Cross Chapter

A canoeing instructor class will be offered by the Washtenaw County American Red Cross this spring. The course will meet on Wednesday, May 30 from 7 to 10 p.m. at Ann Arbor's Scarlett Junior High pool, and on Saturday, June 2 and 3 from 12 to 5 p.m.

Pre-requisites are that participants have basic canoeing and swimming skills and be at least 17 years of age.

There is no charge for the class except for the textbook. For registration or questions, call the American Red Cross at 971-5300.

REMODELING

Residential - Commercial
FREE ESTIMATES
Ib V. JENSEN and SON
LICENSED BUILDER
378 Spring Lake Drive
Chelsea, Mich.
PHONE 475-1820



STEVE EMERT, 7, a first grader at South school, accepts a football, autographed by his idol Rick Leach, from South school Principal Sylvester Woteicki. Steve won the football in a random drawing of names from among participants

in the Multiple Sclerosis Read-A-Thon last month. The 150 children who completed the program at South school read approximately 1,900 books. Sponsors of the children contributed money to Multiple Sclerosis research for each book read.

Legislative Update

A Weekly Report from
State Rep. Mary Keith Ballantine
State Capitol, Lansing 48909
Phone (517) 373-1775

Week of May 10-17

State Representative Mary Keith Ballantine (R-Jackson) has co-sponsored a resolution requesting the state tax commission to limit this year's property tax assessment to no more than 7.7 percent.

The resolution would pressure the state tax commission not to tax individual property owners in 1979 at a level more than 7.7 percent over last year's levels. The 7.7 percent figure is the inflation rate computed by the equation set up in last year's tax limitation referendum approved by voters.

In approving the Headlee Amendment, as it was called, voters told the legislature that they do not want the state to spend their tax money at a greater rate than the inflation rate. In other words, they want the same proportion of their tax dollars to be spent by the state every year.

A weakness in the Headlee Amendment, however, is that it does not protect against individual property tax increases. In fact, the rollback provision of the amendment is inherently unfair in that it affects local taxing units and not individual properties.

As I'm sure you are aware, individual properties, especially in the residential and agricultural classes, have been assessed at a much higher rate than 7.7 percent this year. As a matter of fact, many properties around the state have had their assessments increased by nearly 80 percent over last year.

However, the proposed rollback called for in this resolution would pertain to the average of all classes of property within the individual taxing unit, which is far less than the increase in the value of agricultural land in many areas of the state.

The value of new construction and property improvements would be excluded under the proposed limited increase. I'd also like to point out, though, that new construction and property improvements are also excluded under the Headlee Amendment.

Though a resolution does not have the force of law, it does provide a starting point for the legislature to get behind a plan to limit the individual assessments in Michigan to the rate of inflation.

I believe that this resolution is a good approach to begin solving this very serious problem that affects a large percentage of our state's property owners.

Please Notify Us
In Advance of
Any Change in Address



Auto Mechanics Basic Workshop Slated for Novices

If you drive your own car, and what's under the hood is a mystery, the Washtenaw County Co-operative Extension Service has help for you. It is offering a "Car Basics" workshop Thursday, May 31 from 9 a.m. to 3:30 p.m. at the Rural Activities Center on the Saline-Ann Arbor Rd.

Learn to jump a battery; to check the fluid level of coolant, battery, brakes, oil, power steering, and transmission; to change engine oil and filter... and more! Reservations may be made by calling the Co-operative Extension Service at 973-9510.

Registration is \$2 and class size is limited to 25. Bring your own car, a sack lunch, a clean rag, and wear old clothes appropriate for working outdoors. Co-operative Extension Service Programs are available to all persons without regard to race, creed, color, or national origin.

Sen. Pierce Opens Ann Arbor Office

Senator Edward C. Pierce has announced the opening of his Washtenaw county office. The facility at 711 N. University Ave., Ann Arbor, will be staffed on weekday mornings from 9:30 until noon by volunteers. The aides will be able to offer constituent services, answer questions about pending legislation, and to communicate with the Senator's Lansing office on a regular basis.

The Ann Arbor phone number is 685-4672 and Washtenaw county constituents are urged to communicate their concerns with state government operations and issues through the Ann Arbor office.

NOW IN PROGRESS AT
HENDERSON FORD SALES
6% SALE
All new cars in stock are now being sold for 6% over FACTORY INVOICE!
Now thru May 31, 1979.
3400 Jackson Rd.,
ANN ARBOR - 769-7900

10 Weeks of Summer Fun for Kids
EVERY FRIDAY NIGHT - 7 p.m.
PIZZA LEAGUE
3 games of bowling
Pizza and Coke
(Ages 8-18)
SIGN UP NOW!
CHELSEA LANES
1180 M-52 Ph. 475-8141

MONDAY IS SENIOR CITIZEN DAY
15% DISCOUNT
Inside Dining Room only.
A & W CHELSEA
I-94 and M-52 Phone 475-2055

REMODELING
Residential - Commercial
FREE ESTIMATES
Ib V. JENSEN and SON
LICENSED BUILDER
378 Spring Lake Drive
Chelsea, Mich.
PHONE 475-1820

Auto Mechanics Basic Workshop Slated for Novices

If you drive your own car, and what's under the hood is a mystery, the Washtenaw County Co-operative Extension Service has help for you. It is offering a "Car Basics" workshop Thursday, May 31 from 9 a.m. to 3:30 p.m. at the Rural Activities Center on the Saline-Ann Arbor Rd.

Learn to jump a battery; to check the fluid level of coolant, battery, brakes, oil, power steering, and transmission; to change engine oil and filter... and more! Reservations may be made by calling the Co-operative Extension Service at 973-9510.

Registration is \$2 and class size is limited to 25. Bring your own car, a sack lunch, a clean rag, and wear old clothes appropriate for working outdoors. Co-operative Extension Service Programs are available to all persons without regard to race, creed, color, or national origin.

FEED FOR PROFIT

Feed Formulas Tested, Proved To Get Results
Extra proteins, vitamins and minerals in proper balance, scientifically blended, make our feeds real profit producers for you.

Farmers' Supply Co.
Phone GR 5-5511

CLIMB ABOARD A SIMPLICITY LANDLORD.
NOW THERE'S A GARDEN TRACTOR!

Hydrostatic transmission on the 12 hp model features instant forward and reverse... without clutching or braking. Or choose either the rugged 6-speed transmission on the 10 hp. Reliable balanced Kohler engines with 45 amp-hour battery and 12-volt dual circuit starting alternator. Rear power take-off is standard. Handles a variety of attachments that include a free floating 42" rotary mower (48" mower option on the 12 hp model), tiller, dozer and scraper blades, cultivator, snow thrower, and more. See your new Landlord today.

SAVE ON CASH NO-TRADE DEALS
or
We Give Liberal Allowances on Trade-in Units.

When you want dependability, look for...
Simplicity
Buy With Confidence from A Full-Service Dealer
CHELSEA HARDWARE
110 S. Main St., Chelsea Phone 475-1121

GERANIUMS
\$1.39 ea. \$15.00 doz.

POTTED PLANTS
Caladiums\$1.99 ea.
Fuchsias\$1.39 ea.
Combination Plants\$5.95 up
Hanging Baskets, wide variety.
Selection of Other Small Plants, 50c,
Wide Selection of Cemetery Urns.

FLOWERING PLANTS
Flowering Plants\$5.49 flat

★ Petunias	★ Pansies	★ Snapdragons
★ Zinnias	★ Colours	★ Alyssum
★ Asters	★ Lobelia	★ Begonias
★ Marigolds	★ Celosia	★ Dwarf Dahlias
★ Moss Rose	★ Salvia	★ Periwinkle
★ Impatiens	★ Statice	★ Ageratium

VEGETABLE PLANTS
Vegetable Plants\$5.49 flat

★ Celery	★ Broccoli
★ Tomatoes	★ Sweet Onions
(Most popular varieties)	★ Egg Plant
★ Peppers	★ Sweet Potatoes
★ Cabbage	★ Cauliflower
★ Brussel Sprouts	★ Red Cabbage
★ Head Lettuce	

Asparagus Plants 2-yr. plants 25c
Potted Tomatoes 3 for \$1.00
Cucumbers - Muskmelons - Watermelons
Yellow Squash - Butternut Squash
Zucchini Squash, Acorn Squash, Pumpkins 3 for \$1.00

OPEN MON. thru FRI. 8 a.m. to 7 p.m.
OPEN SATURDAY 8-5; SUNDAY 12 NOON TO 5 P.M.

All Items Grown in Our Greenhouses.
CHELSEA GREENHOUSE
Serving the Community Since 1901
CHARTER MEMBER FTD — WE TELEGRAPH FLOWERS ANYWHERE
7010 LINGANE ROAD, CHELSEA PHONE 475-1353, 475-1354, 475-9313



BIKE-A-THON: This will be the scene at the Chrysler Proving Grounds Sunday, May 20 as kids and bicycles of all shapes and sizes begin the 4th annual American Cancer Society Bike-A-Thon. Participants may ride all or any part of the 30-mile course set for this year's jaunt. Prizes will be awarded for those collecting the most money and obtaining the largest number of sponsors.

VFW Auxiliaries Preparing For State Convention in June

The Oldsmobile Division of General Motors will be just one of the many businesses and individuals to receive awards for their service to their community and to the Ladies Auxiliary to the Veterans of Foreign Wars at the 52nd annual State Convention to be held June 21-24, at the new Kalamazoo Center Hilton Inn in Kalamazoo.

State President Mrs. Robert (Betty) Connolly of Monroe will preside at the State Convention, which is expected to have more than 1,500 delegates and officers representing approximately 30,000 members from the 314 units throughout Michigan.

Included on the agenda will be the presentation of awards on Friday, June 22 to F. W. Bennetts, representing the Oldsmobile Division of General Motors, Linda Pike, the Evening News newspaper of Sault Ste. Marie, Nancy Clay of the Bay City Times and Carol Young and Jim St. Clair of Radio Station WRDD, Bay City.

Bennetts, director of public relations for Oldsmobile, has had a varied background, serving as a superintendent and athletic director of the Reading Public Schools, athletic director and head football and basketball coach at Defiance College at Defiance, O., and assistant director of placement at Michigan State University, in charge of educational placement.

Bennetts joined industry in 1955 by accepting a position with one of the pioneer transportation firms, the Howard Sober Co., and later joining the Oldsmobile Division of GM in 1960 where he has held many

executive positions and is presently director of public relations.

Mrs. Charles (Jean) Karafa, National Council of Administration member, will represent National President Arlene McDermott and the national organization of the Ladies Auxiliary to the Veterans of Foreign Wars of the United States of over 600,000 members nationally.

Mrs. Karafa, from Utica, is one of 24 regional representatives who make up the National Council. She has been a Ladies Auxiliary member for 16 years, serving on many state and national committees and holding many offices before being elected National Council Member in August of 1977 in Minneapolis, Minn.

Other items on the agenda for the four-day convention will be the presentation of awards to local Auxiliaries and chairmen for their outstanding promotion of the various Auxiliary programs involving: community activities with our youth, senior citizens, Veterans Administration hospitals and the promotion of Americanism according to the motto of the VFW: "Remember the dead by helping the living." Other convention activities will include a parade, banquet, Pageant of Drums, memorial services and the election of state officers for 1979-1980.

Members of the Ladies Auxiliary of the Chelsea VFW Post No. 4076 of Chelsea who will attend the State Convention are: Lucy Piatt, Mark Erskine, Eulahlee Packard, Elizabeth Smith and Bessie Sharp.

Farmers Taking Advantage of Set Aside Plan

Nearly 50 percent of the grain farmers in Washtenaw county have declared intentions to participate in the 1979 Set Aside Program for wheat and corn.

Producers intend to plant more than 44,000 acres of corn and have more than 11,000 acres of wheat growing for 1979 harvest. In addition these producers will set aside 11,485 acres for program eligibility.

Participating producers will be eligible for disaster (prevented corn planting if it should happen) deficiency payments, and commodity loans on corn and wheat. Most producers also have volunteered additional set aside and will be eligible for the acreage payment.

Morris L. Johnson Graduates from Navy Hull Maintenance School

Navy Hull Maintenance Technician Fireman Recruit Morris L. Johnson, son of Alfred C. and Blythe Johnson of 115 Freer Rd., Chelsea, was graduated from Basic Hull Maintenance Technician School.

During the eight-week course at the Naval Training Center, Philadelphia, students received instruction on the basics of welding, pipefitting and metalsmithing. They studied the procedures used to fabricate, install and repair all types of shipboard structures, plumbing and piping systems.

A 1977 graduate of Chelsea High school, he joined the Navy in December 1978.

Girls Track Team Hurt By Lack of Depth

(Continued from page one)

Lorrie Vandegrift and Marlene Williams were second and third, respectively, in the hurdles, Debbie Honbaum third in the 100, and Teresa Hoffman set a junior record, winning the mile in 5:51.1. Nancy Hastings was third in the mile.

Halfway through the meet, the Bulldogs held a slim 33-0 lead and the contest looked as exciting as it was supposed to be. Then the roof fell in.

The best Chelsea could do in the next six events were second place finishes from Lorrie Vandegrift in the 220 hurdles and Debbie Honbaum in the 220. Nancy Hastings followed with a win in the two-mile run to score the Bulldogs' final points. Dexter's victory keeps them second in the SEC, with their only loss coming at the hands of Brighton.

Chelsea had to come right back Thursday, in what amounted to a race for fourth place against Saline. Coming up short in several races, the bulldogs fell, 74-49.

Mary Boylan continued to perform well, winning both the shot put and discus. Lorrie Vandegrift had her best throw of the season to take second in the shot, and finished third in the high jump. Saline's Laurie Rogers won the 800 jump with a leap of 5'7" — one of the best in the state this season. Lisa Vandegrift had her best jump of the year to place third in the long jump.

Bulldogs won only three running events: the 880 relay of Chris Johnson, Kathy Honbaum, Tracy Bohlander and Debbie Honbaum; Debbie Honbaum in the 220; and Nancy Hastings in the two-mile run. Near misses came from Debbie Honbaum in the 100 and Nancy Heller in the 440.

The girls completed their dual season and busy week Monday, with an outstanding effort, only to be edged by Lincoln, 65-58.

Chelsea emerged from the field events tied, as Mary Boylan continued as a double winner and Lisa Vandegrift finished second in the long jump again.

Lorrie Vandegrift ran a fine 16.8 hurdles time to upset one

of the league's better hurdlers. Marlene Williams finished third and Chelsea led.

The Railsplitters swept the 100, but Nancy Hastings and Teresa Hoffman ran one-two in the mile to lead, 32-31.

Lincoln took the next four events, with Chelsea getting a second in the 440 from Debbie Honbaum and a third in the 220 hurdles from Lorrie Vandegrift.

Teresa Hoffman, Nancy Heller and Dawn McDowell swept the 100 and Nancy Hastings and Cheryl Bohlander ran one-two in the two-mile.

Hastings' fine time of 13:23 was only two seconds off last year's school record, which Hastings has already lowered to 12:45 this year.

In between those victories, however, Lincoln swept the 220 to wrap up the meet. The victory of Teresa Hoffman, Lisa Vandegrift, Tracy Bohlander and Debbie Honbaum in the mile relay took the score to 75-58. In the end, Lincoln's outstanding sprinters saved the meet for them.

"I thought we had a shot at them if we could squeeze some points in the dashes," said Coach Bill Banton, "but they were just too fast." Of the week, he said, "It's been a rough week and I'm glad it's over. I think the team has done remarkably well with so few runners."

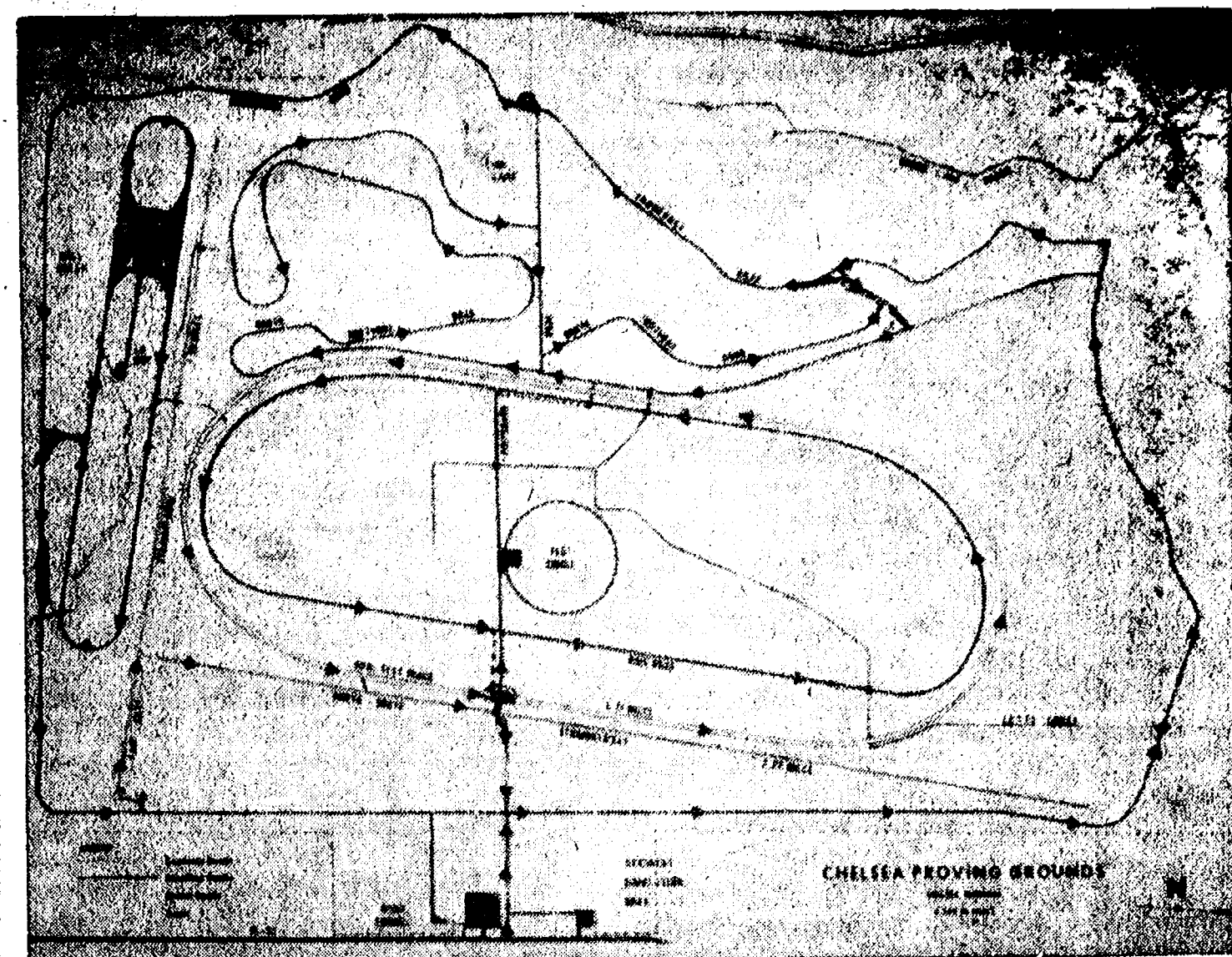
The Bulldogs were down to 14 healthy girls at one point in the week.

These three losses drop Chelsea to 3-4 in the league and send them into Wednesday's conference meet in fifth place. Brighton, Dexter, Lincoln and Saline are the top four.

Generally, league coaches feel that the meet will be wide open this year, with any of the top three given a chance to win. Chelsea should do well in the shot, discus and relays. The Bulldogs should also do well in the 880 and two-mile run.

Final standings are based half on dual meets, half on league meets, so positions could change a great deal on Wednesday.

The meet is at Brighton May 23, with finals starting at 5:30 p.m.



BIKE-A-THON COURSE: Black arrows point the way in this overhead view of the route planned for riders in this Sunday's American Cancer Society Bike-A-Thon. Cyclists may choose to ride the entire 30-mile trail through the scenic hills of the Chrysler Proving Grounds, or they may ride any portion thereof. Activities begin at noon.

Small Business Seminar Slated Saturday at WCC

Washtenaw Community College will offer a special one-day seminar dealing with the formation of small businesses on Saturday, May 19 from 9 a.m. to 3 p.m.

The seminar will provide detailed information on legal, accounting and tax fundamentals for the formation of proprietorships, partnerships and corporations. Kenneth Lindow, CPA, and William E. Jelneck, controller for Eden Foods in Ann Arbor will instruct the class which will meet in Room 1805 of the College's Student Center Building at 4800 E. Huron River Dr.

Advanced registration for the class is requested by phoning WCC staff at 482-2230. A \$15 fee will be charged. As with all programs offered by the College, invited district senior citizens are invited to participate at no charge.

Let our advertisers know you read their ad in The Standard.

NOW ON TUESDAY NIGHTS

CHICKEN BUFFET

with our Famous Deep-Fried Chicken and SPECIAL BARBECUED CHICKEN also mashed potatoes and gravy, dressing, and salad bar. Serving from 4:30-9:00

at the CAPTAINS TABLE
8093 MAIN ST., DEXTER PH. 426-3811

You Read It First in The Standard!

The Chelsea Standard

MAY SALE
Rytx Charter Club Vellum Stationery
\$8.95 regularly \$16

Always correct, this superior letterpaper assures good taste for all your writing needs. Offered in Princess or Monarch sheet sizes with paper color in choice of white, pale blue or soft grey. Choice of three imprint styles as shown (HL, AO, BC) printed in navy blue, deep grey or cherry red. Beautifully gift boxed. 100 Princess sheets and 100 envelopes or 80 Monarch sheets and 80 envelopes.

Bonus:
50 extra, unprinted sheets for use as second pages... only \$2 with order.

THE CHELSEA STANDARD
300 N. MAIN ST., CHELSEA, MICH. 48118

CHARTER CLUB VELLUM: _____ boxes at \$8.95 a box
INCLUDE BONUS: (Check) 50 extra, unprinted sheets at \$2.00 each box.

Imprint Name _____
Street _____
State, Zip _____

Check choice of: paper size & color, imprint style and ink color
PRINCESS SIZE:
 White (7000) Blue (7050) Grey (7060)

MONARCH SIZE:
 White (7100) Blue (7150) Grey (7160)

Imprint Style: HL AO BC
Ink Color: Blue Grey Red

ORDERED BY: _____
Address _____ Apt. _____
City, State, Zip _____
Account No. _____ Phone _____

Charge Payment enclosed
Please include Mich. Sales Tax.

Some Plain Talk

If you're like most people today, you're willing to accept a little discourtesy to get a little service on your car.

Especially, because there is no good reason for it. At Rampy Chevrolet, we have 77 repair stalls and 75 employees. Some are there to sell cars... most are there to service them. All are there because they are good at their job... and because they like doing it.

It used to be, the car buyer was king. Dealerships actually lived by that credo. Then somehow, things got turned around.

There is no reason why you should accept less service than we are offering.

Now, you're treated right when you're buying. But when the deal is signed, and something goes wrong... well, nobody knows you. And, you start shopping.

Take this ad in to your dealer. Tell him you're switching to Rampy, if he doesn't deliver.

By trial and error, you find a good mechanic. And, because he's good and in demand, he can afford to be short with you. If that doesn't inspire him, join our group of satisfied customers.

So, you swallow the discourtesy and pay the bill. It's a sorry state of affairs.

Either way, you win.

Rampy CHEVROLET

Keep that great GM feeling with genuine GM parts.

CORNER JACKSON & WAGNER RDS., ANN ARBOR. PHONE 663-3321

Rampy Sponsors the Huron Valley Corvette Club. For information, call 462-3303.

Community Calendar

Week of May 17-24
1979

Past Presidents of American Legion Auxiliary, Tuesday, May 22, 6:30 p.m. at the Legion Home. White elephant.

Pot-luck dinner at American Legion Post No. 31, Monday, May 23, 6:30 p.m. at the Legion Home. Hot dogs provided, bring dish to pass.

Olive Chapter No. 103 OES, card party, Saturday, May 19, 8 p.m. at Masonic Temple. Public invited. adv49

Sylvan Township Board regular meetings, first Tuesday of each month, 7 p.m., Sylvan Township Hall, 112 W. Middle St. adv49

Parish Rosary March, Wednesday, May 30 at St. Joseph church in Dexter. Marchers should assemble at 6:45 p.m. Rosary and hymns at 7 p.m. in the grotto. Mass in the church at 7:30 p.m. followed by refreshments in the school hall.

Dexter-Chelsea La Leche League, Wednesday, May 23, 7:30 p.m. at the home of Jan Dohner, 880 N. Lima Center Rd., Dexter. Ph. 475-9333. Topic: "The Advantages of Breast Feeding to Mother and Baby."

Ann Arbor Area Association for Gifted Children, final program, Thursday, May 24, 7:30 p.m. at Washtenaw Intermediate School District on Wagner Rd. in Ann Arbor.

May 16, 17, 18, 10 a.m. to 6 p.m. Rummage sale sponsored by St. John United Church of Christ, Franciscan.

Rummage Sale, May 18 from 9 a.m. to 9 p.m. and May 19 from 9 a.m. to 5 p.m., at Longworth Platting Building, Sponsored by St. Barnabas Episcopal church women. adv49

Scout-O-Rama at Briarwood Mall, Saturday, May 19. Displays of indoor and outdoor camping, fire-building, knot tying, etc. will be shown.

Chelsea Community Hospital Auxiliary, Monday, May 21, 8 p.m. in the surgical lounge at hospital. Speaker will be Mary Hazz of the burn center, nurse specialist with Dr. Feller and Dr. Richards.

Regular meeting of the Lyndon are held at 8:30 p.m. the second Thursday of each month at Lyndon Town Hall. adv49tf

Senior Citizens meet third Friday of every month, pot-luck dinner, games and cards. 6 p.m. at St. Mary's Hall.

Lima Township Zoning Ordinance study meeting on Monday, May 21, 8 p.m. advx49

Lima township board regular meeting first Monday of each month, 8 p.m., Lima Township Hall.

Chelsea Co-Op Nursery, 11000 Dexter-Chelsea Rd., is accepting applications for fall nursery school for 3's and 4's. Please call Carol Trinkle, 475-8970 or Barb Raney, 475-1118. adv48tf

Chelsea Communications Club, fourth Wednesday of each month at 7:30 p.m., in the Chelsea Lanes basement meeting room

Lima Township Planning Commission, first Tuesday of each month, 8 p.m., Lima Township Hall.

Chelsea Jaycees, first Tuesday of each month, meeting room at Chelsea Lanes, 7:30 p.m.

Sharon Township Board regular meeting first Thursday of each month, 8:30 p.m. adv42tf

Lyndon Township Board regular meetings the third Tuesday of each month, 7 p.m., in Lyndon Town Hall. adv42tf

The Church of Jesus Christ of Latter Day Saints (Mormons) meets every Sunday, 5 p.m. at the Rebekah Lodge. Public welcome.

PROCLAMATION

VILLAGE PRESIDENT Don D. Wood has proclaimed May 18, 1979 as Poppy Day in the Village of Chelsea, according to Lucy Platt, Poppy Chairwoman of the Veterans of Foreign Wars Auxiliary, and Ruth Christwell, Poppy Chairwoman of American Legion Auxiliary Unit 31, both of which sponsor the annual observance.

WHEREAS, the American Legion Auxiliary and the VFW adopted the Poppy as their Memorial flower which pays tribute to the war dead, and aids the living veterans and their families; and

WHEREAS, the contributions are used solely for Children and Youth and Rehabilitation in our local community;

NOW THEREFORE, I, Don D. Wood, President of the Village of Chelsea, do hereby proclaim May 18 and 19, 1979 as Poppy Days in the Village of Chelsea.



CHARLES F. SMITH

Exchange Mayor Comes from Paw Paw

When three members of Chelsea Village government travel to Paw Paw this Monday, they'll probably spend a good deal of their time touring the wineries and sampling the products. But it won't be a political junket at the expense of the taxpayers, just one of the sights to be seen during Mayor Exchange Day.

Village President Don Wood, Clerk Tom Neumeier and Trustee Mike Sweet and their wives will be traveling to the western Michigan town for the exchange in celebration of Michigan Week.

At the same time, Chelsea will welcome Paw Paw's Mayor Charles F. Smith, accompanied by two councilmen, Paw Paw's Police chief and their wives. As Chelsea officials for a day, the visitors will tour Chrysler Proving Grounds, Jiffy Mix and the Medical Center where they will lunch.

The two groups will reunite later in the evening for a joint dinner.

Paw Paw was settled in 1828 and incorporated in 1859. It is the county seat of Van Buren county and has a population of approximately 3,200. Mr. Smith has been Paw Paw's mayor since 1976.

Fire Calls...
(Continued from page one)

Firemen to I-94 near Kalmbach Rd., Sunday. The blaze was extinguished.

Runs made on Tuesday and Wednesday were both rescue runs.

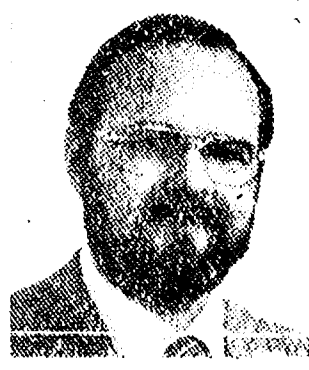
NOW IN PROGRESS AT HENDERSON FORD SALES

6% SALE

All new cars in stock are now being sold for 6% over FACTORY INVOICE!

Now thru May 31, 1979.
3480 Jackson Rd., ANN ARBOR - 769-7900

we're where you are, when you need us



DAVE ROWE

107 1/2 S. Main, Chelsea, Mich. 48116 (313) 475-9104

Dependability, promptness, knowledgeable insurance counsel; this is the insurance service Farm Bureau Insurance Group provides.

- Life, Homeowners, Farmowners, Commercial, Auto, Recreational Vehicle Insurance.

Stop by or phone today.

FARM BUREAU INSURANCE GROUP

DEATHS

Mrs. Lorraine Higgs Dies at Ann Arbor Hospital

Chelsea Woman's Mother Mrs. Lorraine P. Higgs, 204 N. and St., Pinckney, died Thursday, May 15, at St. Joseph Mercy Hospital in Ann Arbor, following a lengthy illness.

Mrs. Higgs was born June 20, 1915 in Toronto, Ontario, to Richard and Edith (Hilary) Jamieson. She had lived in the Pinckney area since 1952.

Surviving are three sons, William, Richard and Robert, all of Pinckney; three daughters, Mrs. Jimmie (Lola) Campbell of Chelsea, Mrs. Eugene (Fran) Dinkel of Pinckney and Mrs. Nell (Midge) Jates of Ann Arbor; 15 grandchildren and two great-grandchildren. Also surviving is her former husband, John, of Pinckney.

Funeral services were held Saturday, May 12 at the Swarthout Hall of the Lamb Funeral Home in Pinckney with the Rev. S. Earle Judson of Pinckney Community Congregational church officiating. Burial followed in Pinckney Cemetery.

Memorial contributions may be made to the Michigan Kidney Foundation.

BIRTHS

A daughter, Angela Marie, to Barbara and Dennis Carpenter, 19800 Ivey Rd., Friday, May 4. Maternal grandmother is Mrs. Mildred Barth of Pinckney. Mrs. Junie Carpenter of Chelsea is paternal grandmother.

Band Concert...

(Continued from page one)

The event is open to the public at no charge, although donations will be accepted at the door to defray expenses.

Future musical happenings will feature the band, orchestra and chorus at Beach school, as the 6th graders present a concert on Monday, June 4.



IN STATE COMPETITION: Beach school students, left to right, Kevin Colombo, Mary Ann Richardson and Steve Kropf will represent Chelsea in the State Mathematics Competition sponsored by Eastern Michigan University on Saturday, May 19, at Central Michigan University. The trio qualified for the test by ranking in the top 25 out of 200 in their grade levels at the regional competition at EMU on May 5.

Memorial Day Parade Planned

All veterans, Girl Scouts, Browns, Boy Scouts and Cub Scouts are reminded that they are needed to march in the Memorial Day parade, Monday, May 28 at 10 a.m. Veterans need not wear uniforms or caps.

Marchers should meet in the parking lot behind Main St. Memorial Day morning at 9:30 a.m.

Telephone Your Club News To 475-1371.

Janet Walz Granted Michigan Legislative Merit Award of \$1,000

Chelsea High school senior Janet Walz, 603 McKinley St., has been awarded one of 150 State of Michigan Legislative Merit Awards. The award is \$1,000 which may be applied toward educational costs at any college in the world selected by the recipient.

Awards are granted to the top 150 seniors who receive the highest scores on the American College Test.

A Time and Place For Everything...

A distracted driver maneuvered his vehicle into a utility pole owned by ConRail last Wednesday afternoon, May 9.

Gary Allan Clark, 23, of Dexter was driving west on Dexter-Chelsea Rd. near Freer Rd. when the car went left of the center line, leaving the roadway and striking the pole.

Clark told police that he "wasn't paying attention" because he was "kissing a passenger."

GO **GAMBLES**
110 N. Main Ph. 475-7472

LAWN & GARDEN CENTER

Power-Packed Tillers SALE PRICED

Light Weight, Time Saver, Easy-reach controls.

3 1/2-HP GARDEN TILLER BUY! \$199⁸⁸ REG. \$229.88

- Rugged Briggs & Stratton engine
- 11" slicer tines till 22-24"
- Lightweight and easy-to-handle
- Dependable belt drive

POWERFUL 5-HP ROTARY TILLER \$279⁸⁸ REG. \$299.88

- Dependable Briggs & Stratton engine
- Horizontal shaft engine; 13" tines
- Heavy duty, wide 10x2.75" wheels
- Lug type tires

Shop Now & Save

AS STATED IN THE CHICAGO TRIBUNE

FOOD PRICES RISE SHARPLY

Lead list at 21 percent annual rate!

WASHINGTON (AP) — Food prices jumped sharply in February for the second straight month to pace a 1 per cent increase in wholesale prices, the Labor Department reported Thursday.

The food price increase was 1.6 per cent, equal to an annual rate of more than 21 per cent. In January, food prices at wholesale rose 1.8 per cent.

Freeze rising food prices with an Amana freezer

Amana Energy Saving Freezers 13 to 17 CUBIC FEET

Manual defrost models in 13, 15 and 17 cu. ft.

- Amana-matic contact freezing — with coils on the bottom of each shelf and at top of liner. So all foods are either on or directly below a prime freezing surface.

Free-O-Frost™ models in 14 and 16 cu. ft.

- Each shelf forms its own fast freeze compartment.
- 16 cu. ft. size takes the Amana automatic ice maker (optional at extra cost).

Deepfreeze™ Made Only By Amana. 7 to 28 CU. FT.

Fast zero-degree storage

- Freezing coils on all 4 sides and the bottom make the entire food liner a fast freeze compartment.

Most models also feature:

- Removable basket and drawer
- Light in lid
- Defrost drain
- Power signal light

Large capacity Amana Upright Freezers 22 or 23 CUBIC FEET

23 cu. ft. manual defrost with Amana-matic contact freezing.

22 cu. ft. Free-O-Frost takes the Amana automatic ice maker (optional at extra cost).

Amana Refrigerators with freezer capacities up to 9.29 cubic feet also available. Pick the size you need today!

HEYDLAUFF'S

113 N. Main St., Chelsea Ph. 475-1221



Real Estate

By PAUL FRISINGER

REALTOR

WHICH IMPROVEMENTS MAKE SENSE

How much money should you put into improving your home? As much as you can afford IF you are doing it for your own enjoyment and don't plan to move for a long time.

regardless of how large or good a house it may be. The addition of an extra bedroom, in-ground swimming pool or central air conditioning, will increase the value of your home.

Swimming Instruction, Bike Safety Classes Offered Grade Pupils

Chelsea students attending North and South Elementary schools will have an opportunity for additional instruction on Saturday, May 19. Swimming instruction will be offered to all students in kindergarten, first and second grades, and bicycle safety instruction will be offered to all students from kindergarten through 5th grade.

10:30 to 11:00, Beach Middle school pool. 1st Grade—11:00 to 11:30, Beach Middle school cafeteria; 11:30 to 12:00, Beach Middle school pool. 2nd Grade—12:00 to 12:30, Beach Middle school cafeteria; 12:30 to 1:00, Beach Middle school pool.

475-8680
475-8689

115 PARK ST.
CHELSEA, MICH.

MAYER AGENCY

(of Springer-Kleinschmidt Agency Inc.)

Your Local Independent Insurance Agency providing dependable protection and prompt claim payment through 10 of the nation's leading insurance companies.

HOME - AUTO - BUSINESS INSURANCE



Sheridan W. Springer

Charles A. Kleinschmidt

Ruth DeVine

Donald S. Peck

Micky Quackenbush

VOTE RON MONTANGE for SCHOOL BOARD

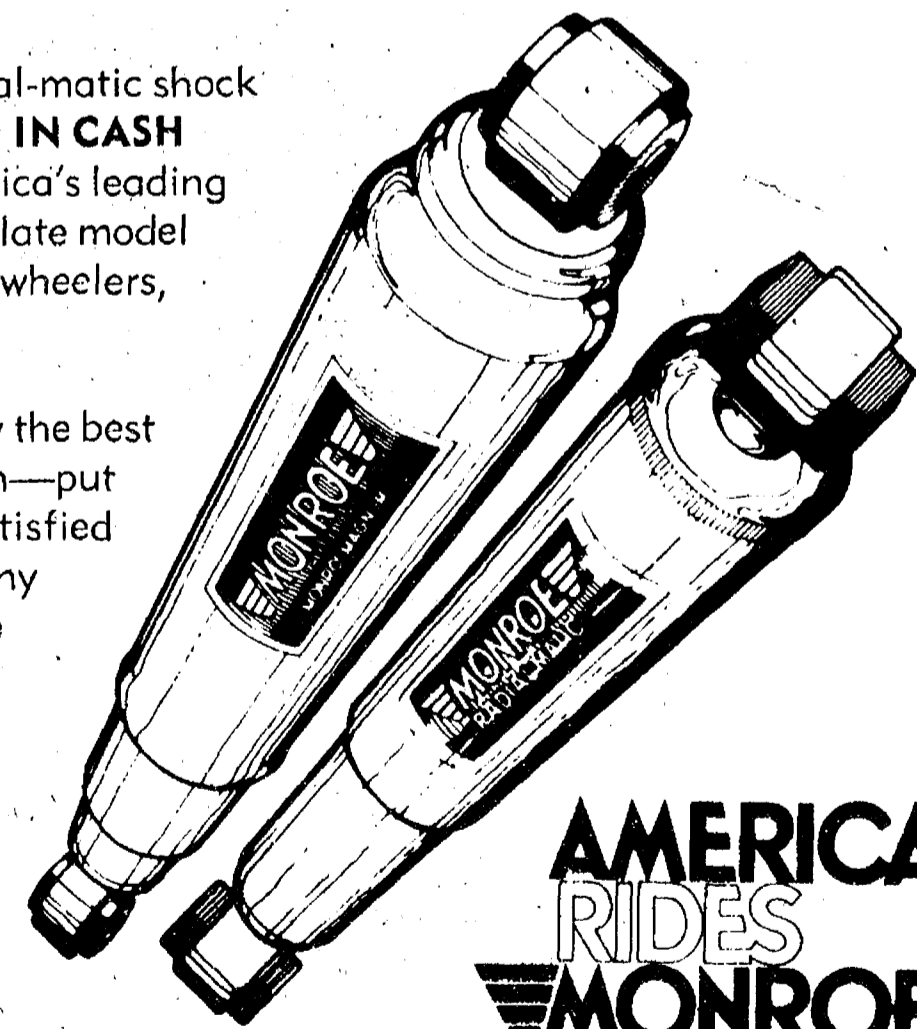
Paid for by Ron Montange for Thomas Neumeyer, Chairman School Board Committee

REWARD

\$10.00 CASH

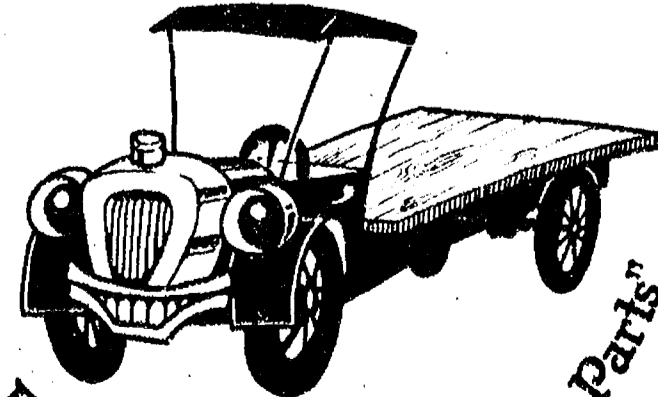
Buy a set of four Monroe-Magnum or Radial-matic shock absorbers and we will give you back \$10.00 IN CASH as an extra reward for buying four of America's leading shocks.

Radial-Matics and Monroe Magnums carry the best guarantee in the shock industry—buy them—put them on your car or truck. If you are not satisfied that your car or truck rides better than at any time you have owned it Monroe will replace the shocks with any comparably priced shocks and will pay the labor to change them!



AMERICA RIDES MONROE OFFER GOOD MAY 15 - JUNE 30

WE WELCOME MASTER CHARGE AND VISA



The Friendly Place to Buy Auto Parts

AVAILABLE AT ALL SERVICE OUTLETS OR AT:

4 GREAT STORES

The PARTS PEDDLER Auto Supply, Inc.

108 E. Middle St. Chelsea 475-1366 8099 Main St. Dexter 426-4688 8715 Main St. Whitmore Lake 449-4312

CHELSEA AUTOMOTIVE

1414 S. MAIN ST. CHELSEA 475-9106 (Across from McDonald's)

Chelsea Automotive Open Sundays, 10-2

NOW IN PROGRESS AT HENDERSON FORD SALES

6% SALE

All new cars in stock are now being sold for 6% over FACTORY INVOICE! Now thru May 31, 1979. 3480 Jackson Rd., ANN ARBOR - 769-7900

Walter Loeffler Farm Receives Michigan Centennial Award

A farm owned by Walter and Rubena Loeffler at 13180 Waters Rd., has been designated as a Centennial Farm by the Division of Michigan History.

The land has been in the Loeffler family since Walter's grandfather, George Loeffler, bought it in 1878.

Walter was born on the home farm and has always lived there. His parents were Mr. and Mrs. George J. Loeffler.

According to the information on the abstract, one Levi Roger secured the land from the U. S. Government, although the date is not given.

The original size of the farm when the Loefflers took ownership from Walter's father was 140 acres. It was reduced to the present size when Walter and Rubena sold 40 acres of marsh-

land to two buyers and parted with one additional acre to accommodate an oil line.

The remaining 99 acres are all under cultivation, planted in wheat, oats, corn and hay.

Buildings on the land include two barns, a corn crib, tool shed, garage and farmhouse. The 10-room house is well over 100-year old and is the original one constructed on the farm.

What now serves as the toolshed was once used as a garage for Zion Lutheran church. It wasn't cars they kept there, though, but horses and buggies.

All work on the 99 acre is done by Walter alone, with occasional help from his son Carl, who lives in Ann Arbor. The Loefflers also have a son, Nor-

man, who lives in Rhode Island, and a daughter Arlene Barels, who is Lima township clerk.

With three children and five grandchildren, the Loeffler land has an excellent chance of becoming a bicentennial farm someday.

Secretary of State Richard H. Austin, whose Department administers the Centennial Farm program, said the program was inaugurated in 1948.

Certificates are provided by the Division of Michigan History. Large metal markers are provided by the Detroit Edison and Consumers Power Companies.

Explains Austin, "A Centennial Farm is one which has been in the continuous possession of the same family for 100 years or more."

For this purpose, the Michigan History Division considers a farm to be either 10 or more acres having estimated farm product sales of more than \$50 yearly, or less than 10 acres having estimated sales of at least \$250 yearly.

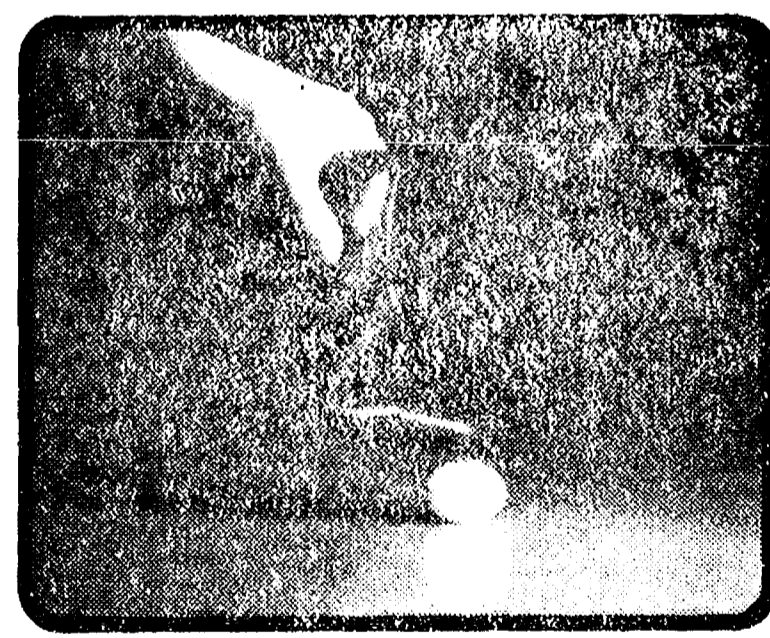
A centennial farm comprises only the land and not the farm buildings, which may be remodeled or even new.

Applications for Centennial Farm recognition are obtainable from: Centennial Farm Program, Division of Michigan History, Michigan Department of State, Lansing 48918.



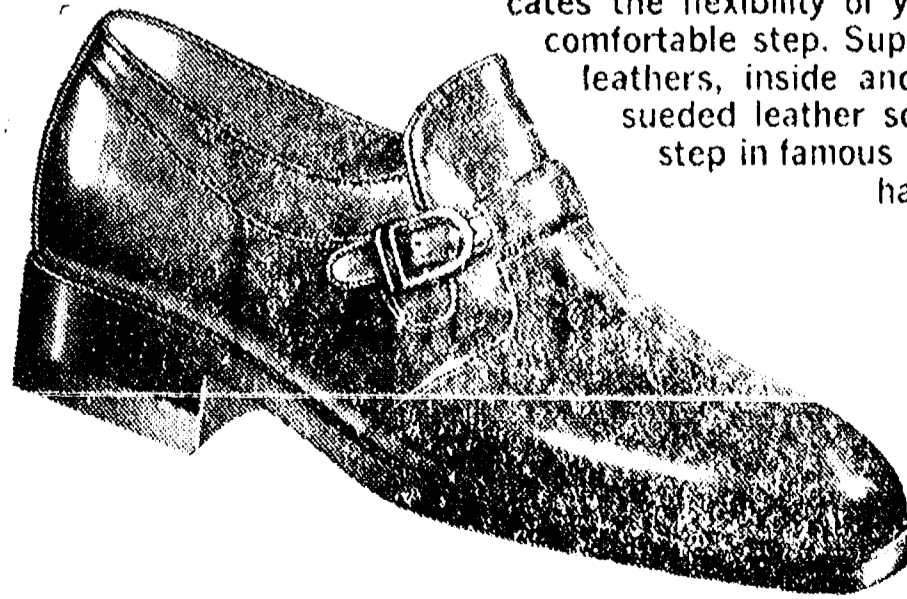
CENTENNIAL FARM: Walter and Rubena Loeffler and their son, Carl, pose with the marker provided by Detroit Edison to commemorate their farm as a Centennial Farm.

for 100 years. The Loefflers, whose farm was designated centennial in December 1978, went markerless until a phone call from The Chelsea Standard traced down the wayward marker and brought it to the Loefflers.



FREEMAN Free-Flex FIRST STEP FLEXIBILITY

Footwear so supple, it won't break a raw egg when pressed down. Our unique construction duplicates the flexibility of your foot, step after comfortable step.



FORUM Chestnut or Black Signature Calfskin.

\$50

Other styles from \$35 up

Store Hours: Open Mon. thru Sat., 8 a.m. to 5:30 p.m.

Strieter's Men's Wear

Since 1914



STATE AWARDS: Robert Smith and Sandra Meyer, presidents, respectively, of the Chelsea Jaycees and Jaycee Auxiliary display state awards presented to the local groups last week-end at the state convention in Lansing. Smith holds the Gies-senbier Trophy for the Most Outstanding Chapter in the State and Meyer shows the award she received for Most Outstanding President of the Year. It has been nearly seven years since the Chelsea groups received such state recognition.

Chelsea Jaycees, Auxiliary Both Garner Top State Awards

Following a seven-year lull in recognition, the Chelsea Jaycees and Auxiliary burst upon the scene like skyrockets at the State Convention in Lansing last week-end, taking the top state award in Division III.

Hometown Jaycees took the Gies-senbier Trophy for the most outstanding chapter in the state in Division III, a size classification. Chelsea hadn't been awarded the Gies-senbier in 10 years.

The men also took a first-place finish in Community Action Programming and in Project of the Year, the Youth Horseshow.

Chelsea's Auxiliary did even better, earning the title of Auxiliary of the Year in Michigan in Class III. President Sandy Meyer, following an arduous selection process and oral interview, was chosen Outstanding President of the Year by the judging panel.

It has been seven years since the Jaycees took the Auxiliary of the Year title, and Sandy Meyer's election was an all-time first for Chelsea.

Alberta Colby was named one of the top five outstanding Jaycees in the state, another first-time finish for Chelsea.

Jaycees took honorable mention awards in Individual Development, Publications, Membership Recruitment and Personal Growth.

Jaycees garnered second place in the Project of the Year (Joint-M-Night) and captured a third-place finish in State Recognition to go along with their certificate for 40 percent growth.

The first federal agency to promote occupational safety in the United States was the Working Conditions Services, which sought to improve conditions for defense workers during World War I, according to the U. S. Department of Labor publication, "Labor Firsts in America."

Subscribe today to The Standard!

JV Softball Team Loses 2 Last Week

Chelsea's JV softball team met with a double disaster last week, as they dropped games to Brighton, 11 to 5, and South Lyon, 16 to 11.

Amy Unterbrink suffered her first loss of the season against Brighton, as the young freshman was troubled by control problems and weak hitting support from her teammates. Amy pitched well as she struck out 11 hitters, but injured her own cause as she also walked 11 and hit four batters. Unterbrink has been able to overcome the problem of wildness before, but this time there was just too many runners on base. Amy failed to maintain her concentration and wild-pitched a number of runners across home plate.

Unterbrink gave up only one hit, a bunt single, but the Chelsea batters could not get the unearned runs back, as a good Brighton pitcher held them in check. The only Bulldog hitters to solve the puzzle of the Brighton pitcher were Beth Brish with two singles and Paula Haist who had two singles and four RBI's.

On Friday, the JVs traveled to South Lyon for a rematch with a team they had defeated earlier in the year. Chelsea started well as Ann Eisele took an 8-2 lead into the bottom of the fourth inning. Ann pitched well, but the JVs defense fell apart during the fourth and fifth innings as they committed three crucial errors that allowed South Lyon to score eight unearned runs.

Chelsea hitters again had a poor day, but Beth Bush and Paula Haist

continued to stroke the ball well, as Bush collected two more hits and Paula drove in seven of Chelsea's RBI's.

The JVs record is now 7-3, with three games scheduled for this week.

Denham E. Smith Receives Academic Honor at Mercy College

Denham E. Smith of Chelsea received special recognition for excellent academic achievement at the annual Honors Reception at Mercy College of Detroit May 2. A student in the Physician's Assistant program, he is the husband of Judith L. Smith.

NOW IN PROGRESS AT HENDERSON FORD SALES

6%

SALE

All new cars in stock are now being sold for 6% over FACTORY INVOICE!

Now thru May 31, 1979.

3480 Jackson Rd., ANN ARBOR - 769-7900

KAISER'S GREENHOUSE

Open 7 days, 8 a.m. to 9 p.m.
12700 Jaycox Road, Stockbridge

- ★ FLOWERING ANNUALS
- ★ VEGETABLE PLANTS
Trays or flats
- ★ HANGING BASKETS
- ★ MACRAME HANGERS
- ★ CERAMIC POTS
- ★ GERANIUMS

Ph. 517-851-8745

Randy Musbach Earns Degree at Miami U.

Randy Musbach, son of Mr. and Mrs. Arden Musbach, 159 Orchard St., graduated from Miami University in Oxford, O., Sunday, May 6, with a Bachelor of Arts degree.

Randy graduated from Chelsea High school in 1975 and was a member of Delta Tau Delta fraternity at Miami. He will attend the University of Toledo Law School in the fall.

Chelsea High School 1979 Boys Varsity Track Schedule

May 19—Regionals	Milan 10:00 a.m.
May 21—Brighton	A 4:00 p.m.
May 23—League	Brighton

Let our advertisers know you read their specials in The Standard!

CHELSEA FARMER'S MARKET

WILL OPEN SATURDAY, MAY 26
from 7 a.m. to 5 p.m.

And Continue Each Saturday Until October 20, Rain or Shine

Stall fee: \$5.00 a week or \$15.00 per month

SALEABLE MERCHANDISE IS AS FOLLOWS:

- HOME-GROWN PRODUCE
- HOME-GROWN FLOWERS and PLANTS
- HOME-BAKED GOODS

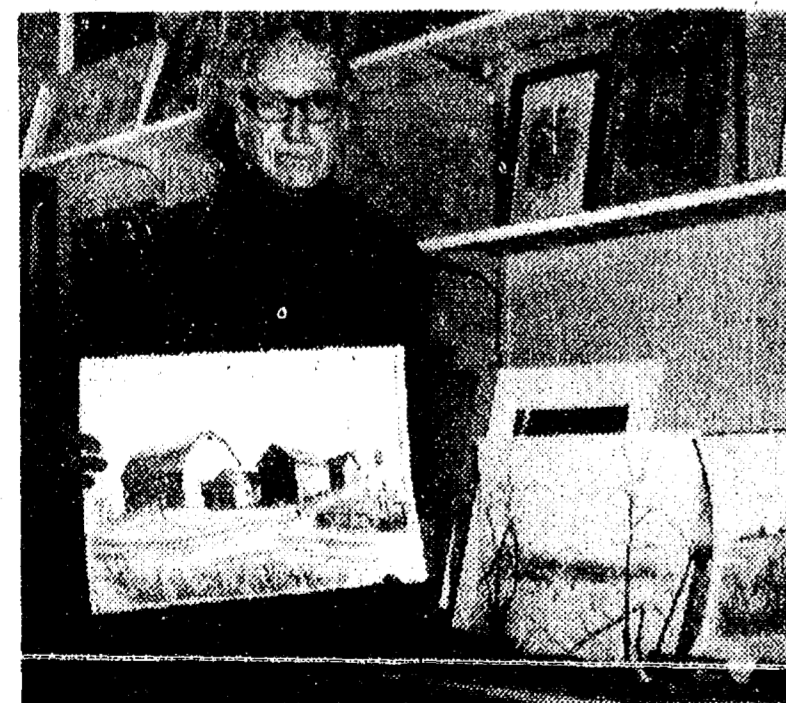
Application forms are available at Chelsea Village Offices at 104 East Middle Street for lot or space selected, or Saturday morning at market site from supervisor. Each stall has been enlarged to 14' x 24' which is adequate to park vehicle and room for display of merchandise.

Come Help Us Celebrate!

FREE DRAWING

Ann Arbor Trust wants to share the work of two very talented local artists with you. During our Grand Opening Celebration we will have two drawings: one for a Ben Bower painting, and another for a Dale Fisher photograph. You don't have to be a customer or open an account to enter. Just visit our Chelsea Banking Office between May 18 and June 2 and fill out an entry form for either or both drawings. That's all there is to it. The drawings will take place June 2, and you need not be present to win. Be sure to stop in soon and fill out your entry form.

BEN BOWER



Benjamin Bower, well-known Chelsea artist has been commissioned by Ann Arbor Trust to create several original watercolor paintings of Chelsea area scenes to adorn the walls of our Chelsea Banking Office. Ben studied art at the Applied Art Academy and Michigan State University and has lived in the Chelsea area since 1952. For 25 years Ben served as Office Manager at the Waterloo Recreation Area Headquarters during which time he pursued art primarily as a hobby and made custom picture frames. In 1975 Ben retired and began devoting full-time to his art and picture frame business at his home on Chandler Street in Chelsea.

DALE FISHER



Nature's most dramatic moments are captured on film by Dale Fisher, and Ann Arbor Trust has been fortunate to acquire several of Dale's beautiful photographs of Chelsea area scenes. A well known photographer and lifelong resident of Washtenaw County, Dale began his photographic training in the U.S. Navy. For the past 15 years Dale has been involved strictly in helicopter photography. His clients include industrial, commercial, and real estate firms, both local and out-of-state. Dale's work has been featured in the Detroit Free Press and on WXYZ-TV, Channel 7, in Detroit. Dale and his family have lived on Notten Road in Sylvan Township for the past seven years.



We've just opened our beautiful new Chelsea Banking Office and you're invited to help us celebrate. Please join us for our Grand Opening festivities May 18 through June 2. We'll be serving refreshments to all visitors, and you can register for two free drawings. Take advantage of this opportunity to meet our staff and get acquainted with Chelsea's newest full-service bank. We're open 9 a.m. to 4 p.m. Monday through Thursday, 9 a.m. to 6 p.m. Friday, and 9 a.m. to 12 noon on Saturday.

GRAB A HANDFUL OF TREASURE

Did you ever dream about finding a chest full of treasure? Well, during our Grand Opening Celebration your dream can come true! Our Chelsea Banking Office has a treasure chest — full of coins — and when you open a savings account* we'll let you "grab" a handful of our treasure. Not only do you get to keep all the coins that you can take in one hand, but you'll have a savings account at the bank that pays the highest interest rate on savings. Stop by this week and join the fun at the "Bank that has it all."

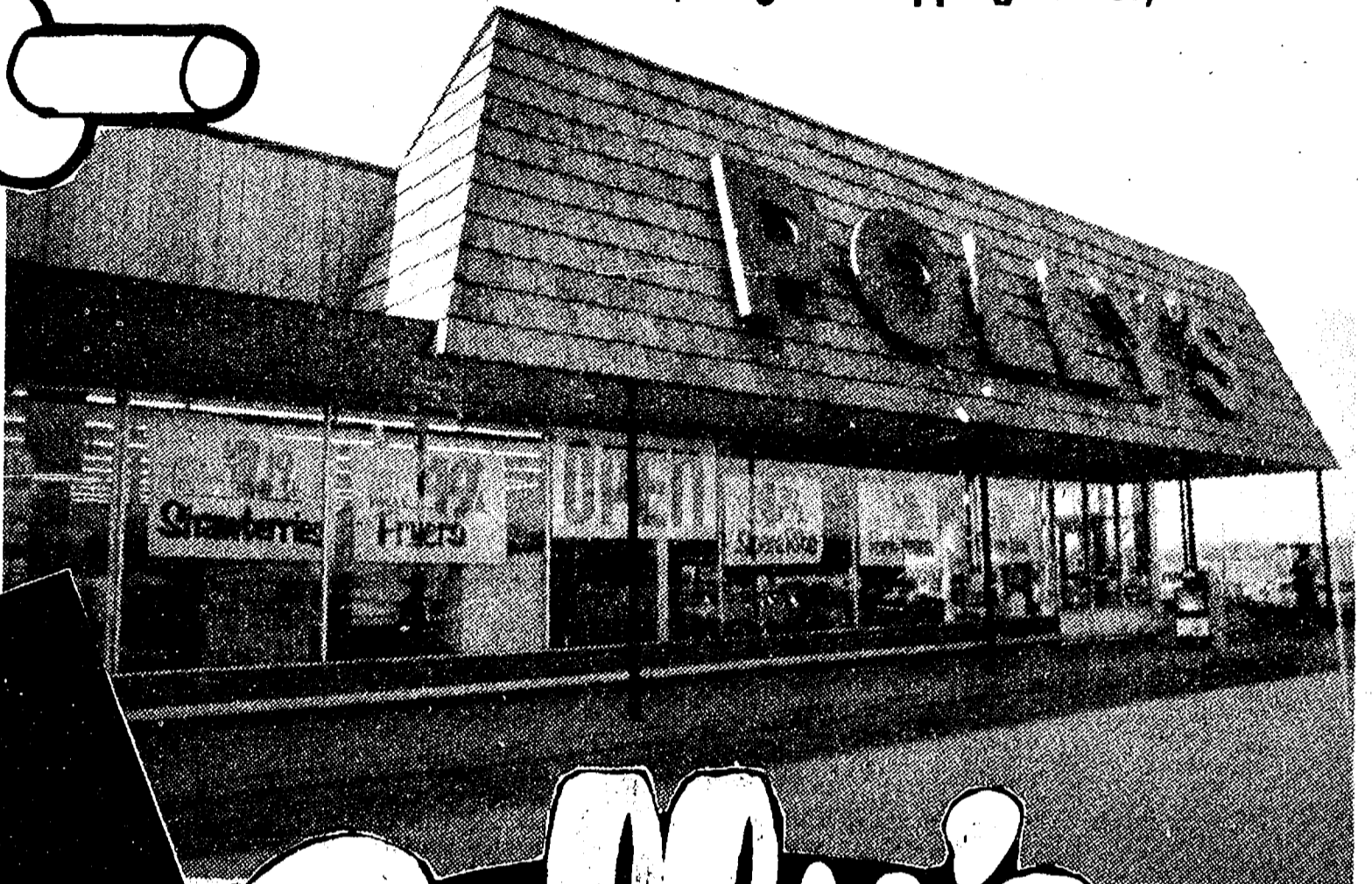
*\$100 minimum to open a savings account. \$10 minimum for minors. Offer good May 18 through June 2 — Chelsea office only.



CHELSEA BANKING OFFICE ANN ARBOR TRUST COMPANY

1478 Chelsea-Manchester Road - Chelsea, Michigan 48118 - Phone 475-9154

We proudly announce
the grand opening of
another conveniently
located Polly's . . .
3152 East Michigan
(Eastgate Shopping Center)



**3RD
BIG WEEK
of SAVINGS**

Polly's
MASTERMARKETS

The Great Grocery Giveaway!
**5 - \$100.00 WINNERS
EVERY WEEK FOR
FOUR WEEKS!**
REGISTER
AT ANY 5
POLLY'S
LOCATIONS

Free!
**MICRO
WAVE
OVEN**

DRAWING SATURDAY
MAY 27, 1979
REGISTER TO WIN AT
POLLY'S ON 3152 EAST
MICHIGAN ONLY!



16 OZ.
LOAVES

BONNIE
WHITE BREAD
5/\$1.00



BONNIE
**HAMBURG or
HOT DOG
BUNS**
3/\$1.00
8 PKS.

SAVE 30¢ WITH IN-STORE COUPON
FRENCH'S SQUEEZE
MUSTARD

16 OZ. **39¢**

SAVE 40¢ WITH IN-STORE COUPON
PLANTERS

**COCKTAIL
PEANUTS**

16 OZ.

1.19

SAVE 70¢ WITH IN-STORE COUPON
HEFTY SUPERWEIGHT

**TRASH
BAGS**

15 CT.

1.29

SAVE 12¢ WITH IN-STORE COUPON
ASSORTED FLAVORS

**ROYAL
GELATIN**

6 OZ.

29¢

SAVE 51¢ WITH IN-STORE COUPON
25¢ OFF LABEL

**WISK
DETERGENT**

64 OZ.

1.99

SAVE 20¢ WITH IN-STORE COUPON
KEEBLER

**ZESTA
SALTINES**

16 OZ.

59¢

SAVE 20¢ WITH IN-STORE COUPON
NABISCO

**CHEESE
NIPS**

10 OZ.

59¢

SAVE 46¢ WITH IN-STORE COUPON
SUNSHINE

**HYDROX
COOKIES**

15 OZ.

69¢

SAVE 30¢ WITH IN-STORE COUPON
KEEBLER

**RICH n'
CHIPS**

13 OZ.

89¢





8 PAK/HALF LITER
R·C· COLA

or **DIET RITE COLA**

89¢

PLUS
 DEPOSIT



SAVE 30¢
 INDIAN

CORN CHIPS

49¢

11 OZ.

PACKER LABEL SAVINGS!

NAME BRAND QUALITY AT NO LABEL PRICES

APPLESAUCE	25 OZ.	53¢	CHOCOLATE SYRUP	16 OZ.	55¢
INSTANT POTATOES	32 OZ.	\$1.39	RASPBERRY PRESERVE	18 OZ.	93¢
KIDNEY BEANS	15 OZ.	28¢	SALAD DRESSING	32 OZ.	79¢
WHOLE KERNEL CORN	16 OZ.	28¢	SWEET RELISH	16 OZ.	59¢
EARLY JUNE PEAS	16 OZ.	31¢	FROSTED FLAKES	20 OZ.	99¢
TOMATOES	16 OZ.	35¢	RICE KRISPIES	13 OZ.	85¢
TOMATO SAUCE	8 OZ.	18¢	LAUNDRY DETERGENT	49 OZ.	\$1.09
PORK and BEANS	15 OZ.	27¢	LIQUID BLEACH	128 OZ.	69¢
CHUNK LIGHT TUNA	6½ OZ.	69¢	PAPER PLATES	100 CT.	79¢
TOMATO CATSUP	32 OZ.	69¢	TODDLER DIAPERS	12 CT.	\$1.39
VEGETABLE OIL	38 OZ.	\$1.59	DAYTIME DIAPERS	30 CT.	\$1.75
CAKE MIX	16½ OZ.	49¢	BATH TISSUE	4 PAK	69¢
BROWNIE MIX	16 OZ.	69¢	JUMBO TOWELS	EA.	49¢

GOVERNMENT INSPECTED

MIXED FRYER PARTS

49¢

LB.

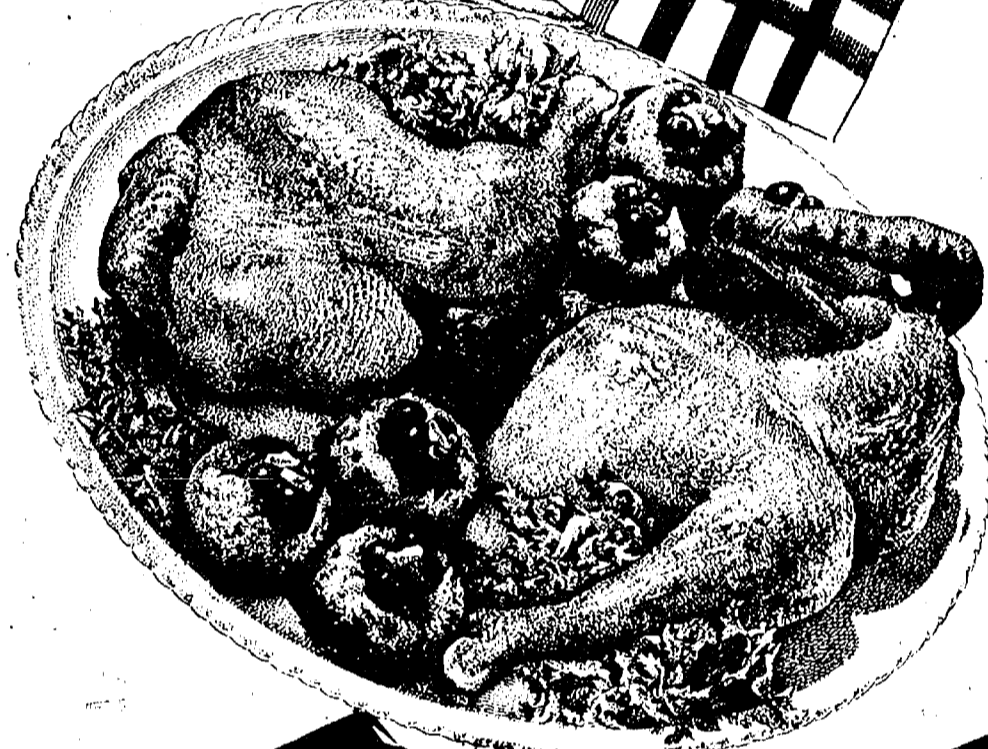


FRESH
FRYER BREAST
WITH RIB
99¢
LB.

FRESH
FRYER LEGS
WITH BACK
89¢
LB.

FRESH
SPLIT FRYERS
55¢
LB.

FRESH
STEWING HENS
79¢
LB.



SAVE \$1.00 LB. FARMER PEETS
BABY BONANZA
WATER ADDED
\$1.79
LB. 3 POUND AVERAGE



SAVE 30' FARMER PEET
RE-PEETER BACON
1.59
LB.

WEST VIRGINIA
SAUSAGE LB. **1.69**
HYGRADE SMOKED
PORK CHOPS LB. **1.99**
FANCY
CUBE STEAK LB. **2.39**
BULK CHEESE
PINCONNING LB. **1.69**

WILSON CORN KING
CANNED HAM
\$5.99
3 LB.

CHOICE BEEF
**BOTTOM
ROUND
ROAST**

\$1.89
LB.

CHOICE BEEF
BOTTOM ROUND
**SWISS
STEAK**

\$1.99
LB.

CHOICE SHOULDER CUT
**LAMB
CHOPS**

\$1.89
LB.

CHOICE
**LAMB
CHUCK
ROAST**

\$1.29
LB.



SAVE 30' WITH IN-STORE COUPON
ECKRICH
**HOT
DOGS**
\$1.59
LB.



SAVE 30' WITH IN-STORE COUPON
ECKRICH SLICED
BOLOGNA
LB. **1.79**
SAVE 30' WITH IN-STORE COUPON
ECKRICH
SMORGAS PAK
1.89
SAVE 30' WITH IN-STORE COUPON
ECKRICH
SMOK-Y-LINKS
10 OZ. **1.29**

CHOICE BEEF
**EYE-O
ROUND**
\$2.79
LB.

FRESH FROZEN
SMELT LB. **79¢**
FRESH FROZEN
WHITEFISH FILLETS 12 OZ. **\$1.39**
BILMAR
TURKEY FRANKS 12 OZ. **79¢**
SMOKED
TURKEY DRUMSTICKS LB. **1.19**

FRESH LUSCIOUS
**RED RIPE
 STRAWBERRIES**

79¢

QUART



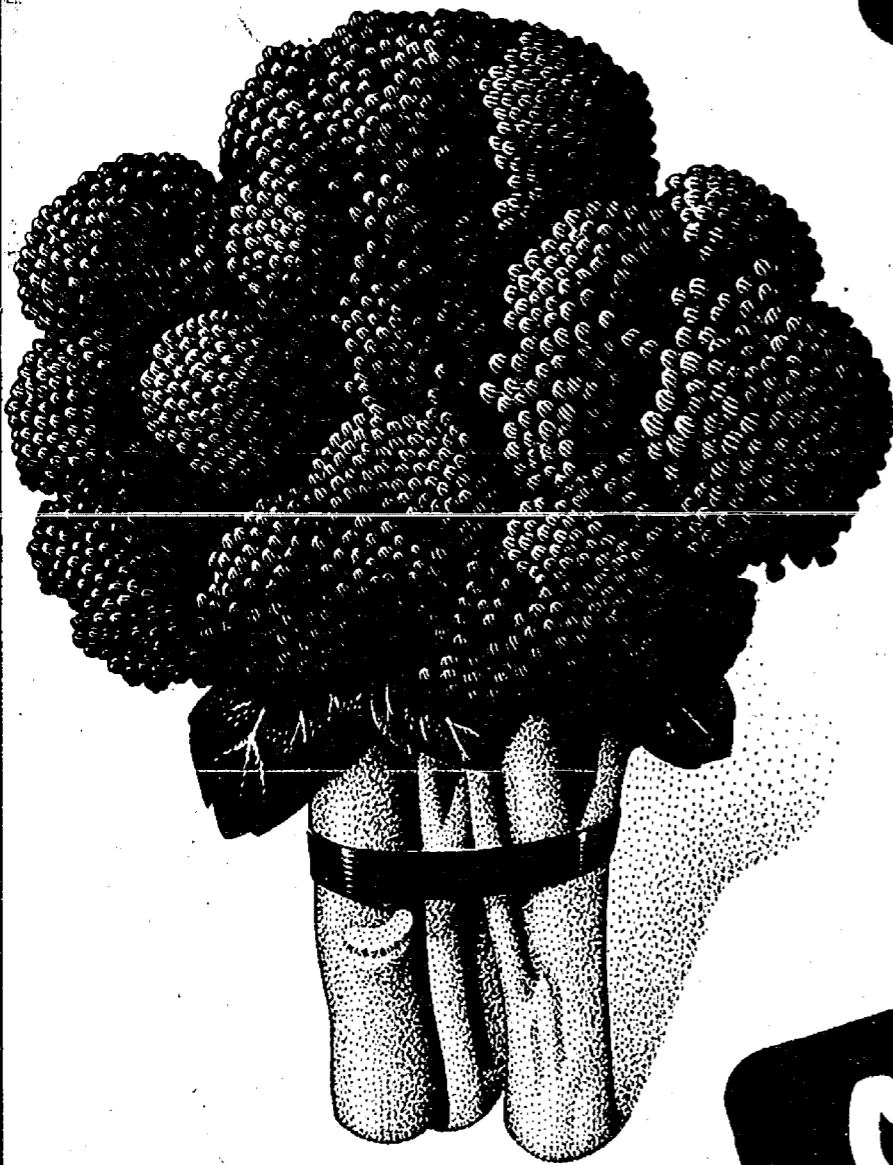
JUICY
**CHERRY
 TOMATOES**
 ZESTY
**BEAN
 SPROUTS**

PT. **49¢**

8 OZ. **39¢**

CRISP 1 LB. BAGS of
**CARROTS or
 TASTY MILD
 GREEN ONIONS**

Your
 Choice **5/\$1**



TASTY
BROCCOLI

EA. **59¢**

SNOW-WHITE
CAULIFLOWER

EA. **99¢**

MICHIGAN
**COTTAGE
 CHEESE**
 15 OZ. **79¢**
YOPLAIT YOGURT
 2 6 OZ. **79¢**

BRACH'S
**PIC-A-MIX
 CANDY**

LB. **79¢**

GIVE YOUR LOVES A LITTLE HUG



5
 FLAVORS

Daily's
 LITTLE HUG
 FRUIT FLAVORED
 DRINKS

8 for 99¢

BORDEN
JUMBO TREAT
ICE CREAM

ONE
 GALLON

1.89

BORDENS
CHOCOLATE
DRINK

PLASTIC
 GALLON

88¢



SCOT LAD 100% PURE

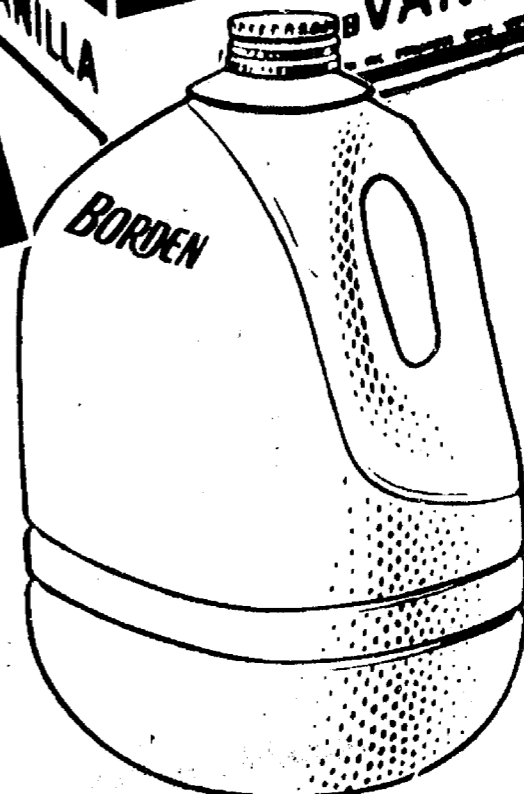
ORANGE JUICE

12 OZ.
 CAN

59¢

HEATH
 TOFFEE
 BARS
 6 PAK **79¢**

BORDENS
 SOUR
 CREAM
 PT. **69¢**



GORTONS
 CRUNCHY
FISH
PORTIONS

12 OZ. **1.59**

GORTONS
 CRUNCHY
FISH
STICKS

12 OZ. **1.59**

SCOT LAD
 CREAMY
WHIPPED
TOPPING

9 OZ. **39¢**

ORE-IDA
 REGULAR or CRINKLE
FRENCH
FRIES

32 OZ. **69¢**

Polly's
MASTERMARKETS

Presents

FREE

IMPORTED
HANDCRAFTED

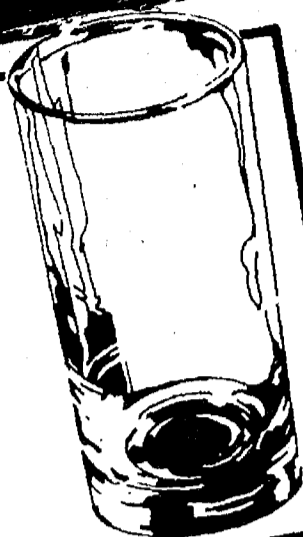
GLASSWARE

Just for saving our special
register tapes!

FREE!

WITH \$300 IN TAPES.

4 PC. SET
CROWN 10 OZ.
HIGH BALL
GLASSES



FREE!

WITH \$300 IN TAPES.

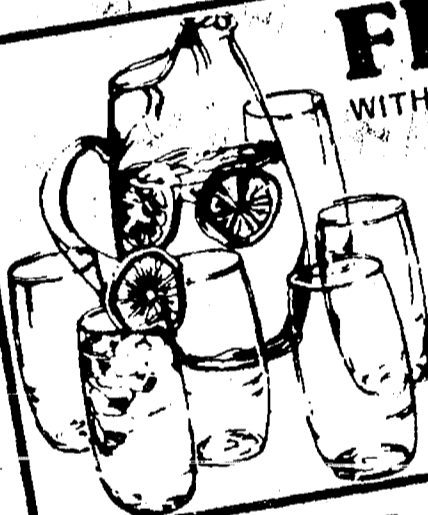
4 PC. SET
CROWN 13 OZ.
OLD
FASHIONED
GLASSES



FREE!

WITH \$400 IN TAPES.

BEVERAGE
SET
7 PC. SET
1 PITCHER
6 TUMBLERS



FREE!

WITH \$600 IN TAPES.

4 PC. SET
14 OZ.
PILZNER
GLASSES



FREE!

WITH \$600 IN TAPES.

4 PC. SET
7 OZ.
IRISH COFFEE
GLASSES



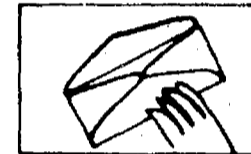
FREE!

WITH \$500 IN TAPES.

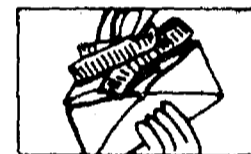
4 PC. SET
10 OZ.
PARFAIT
GLASSES



HERE IS ALL YOU DO



Pick-up your
Tape Saver
envelope at
any check out.



Collect the
required amount
of our special
cash register
tapes.



Turn in your
envelopes for
your free gifts.

**START YOUR
SETS TODAY!**

SAVE
HERE

With the
Gillette All-Star
Cash Refund Offer

Atra Atra

TAKE
ONE

DEPOSIT

TAKE ONE

Atra Atra Atra

Atra Atra Atra

Atra Atra Atra

Atra Atra Atra

Atra Atra Atra

Atra Atra Atra

Atra Atra Atra

VOTE
HERE

With the
All-Star Election

Major League Baseball

Major League Baseball

Major League Baseball

Major League Baseball

Major League Baseball

Major League Baseball

Major League Baseball

Major League Baseball

Major League Baseball

Major League Baseball

Major League Baseball

Major League Baseball

Major League Baseball

Major League Baseball

Major League Baseball

Major League Baseball

Major League Baseball

Major League Baseball

Major League Baseball

Major League Baseball

Gillette

With the
All-Star Election

Major League Baseball

Major League Baseball

Major League Baseball

Major League Baseball

**ATRA
RAZOR
3.69**

**ATRA
REFILLS**

5 CT. **1.29**

**TRAC II
REFILLS**

9 CT. **2.09**

SAVE 30¢ WITH IN-STORE COUPON

**SCOPE
MOUTHWASH**

18 OZ.

1.29

SAVE 20¢ WITH IN-STORE COUPON

**BUFFERIN
ARTHRITIS STRENGTH**

40 CT.

1.29

**DOANS
PILLS**

24 CT.

1.44

**SUMMER'S
EVE**

DISPOSABLE DOUCHE

89¢

SCOPE

Arthritis
Strength
BUFFERIN



PRELL 5 oz. **1.59**

20¢ OFF LABEL